



Introducing TEFD : Teachers' English Fluency Development

Why TEFD?

“Language of instruction impacts learning outcomes and a teacher’s ability to delivery quality is critical to the success of students.”



Why Should School Leaders Opt For This?

Simple. Children often pick up language they hear in their surroundings.

If the language they're hearing teachers speak is incorrect, this will impact their learning!

Language of
instruction
impacts learning
outcomes.

Predominantly Women;

Most teachers are not
fluent in English
communication;

Double edged : Impact
multiple cohorts;
Hence, multiplier effect

Incentivize to upskill; Schools
must act decisively as...

Teachers : the reality

Teachers' capacity to
deliver quality is critical.

Highlights of TEFD



BodhiTree

Democratising Teaching Excellence

Content: Relevant to the context of a school; Spoken English for teachers to be used in a classroom;

Concepts : Precise, practical and implementable immediately at school the next day; Focus on common errors;

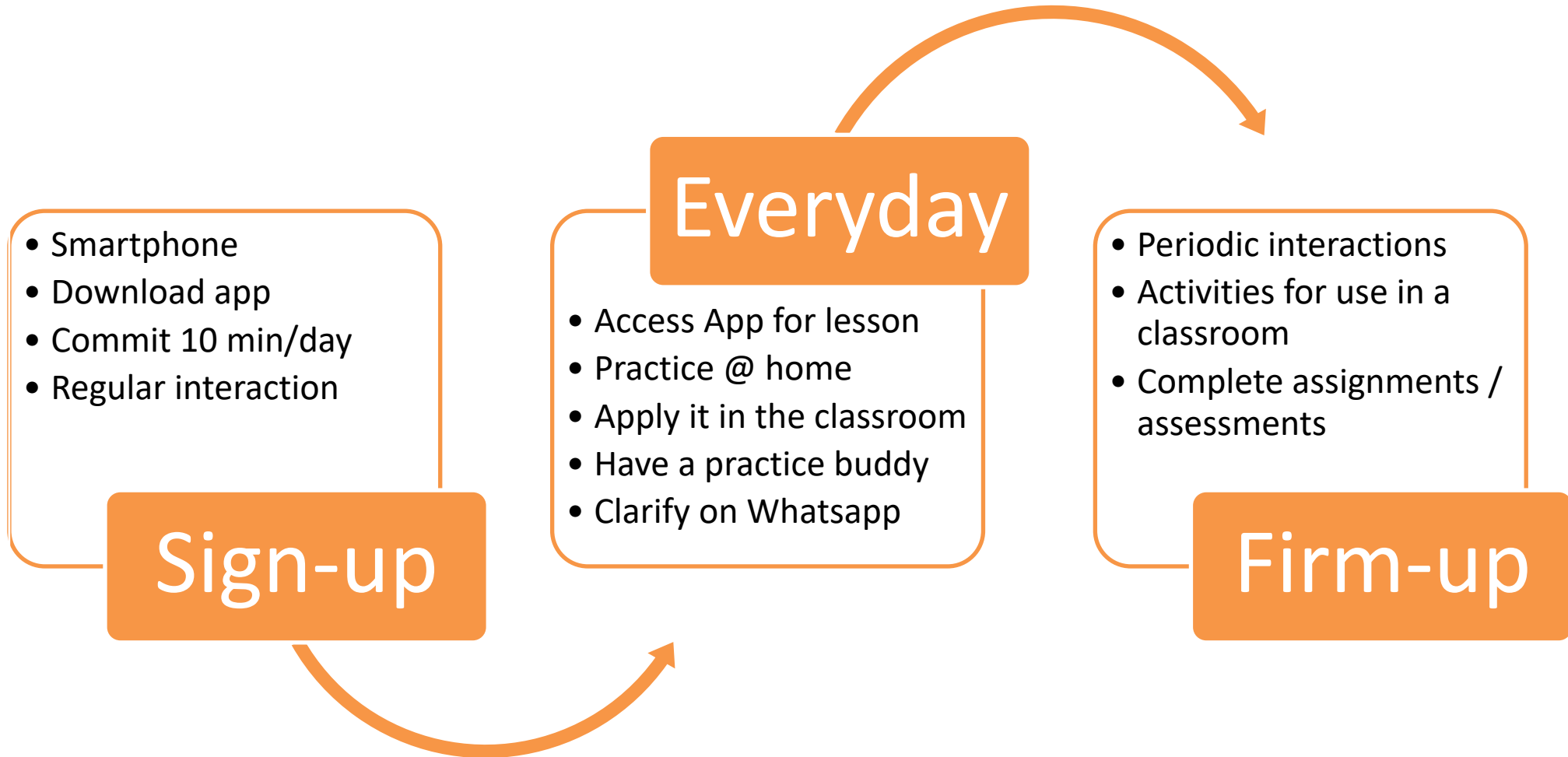
Empathetic: Sensitive to the needs of teachers; Localized and gradual progression;

Mentoring: To motivate, cheer, support and provide confidence to the reticent learner through contact sessions;

Accessible and Affordable: At the teacher's time, place; No impact on her/his daily routine

Micro-learning: Close skills and knowledge gap

Lessons in short bursts; Just-in-time; At the teacher's time and place; Better retention



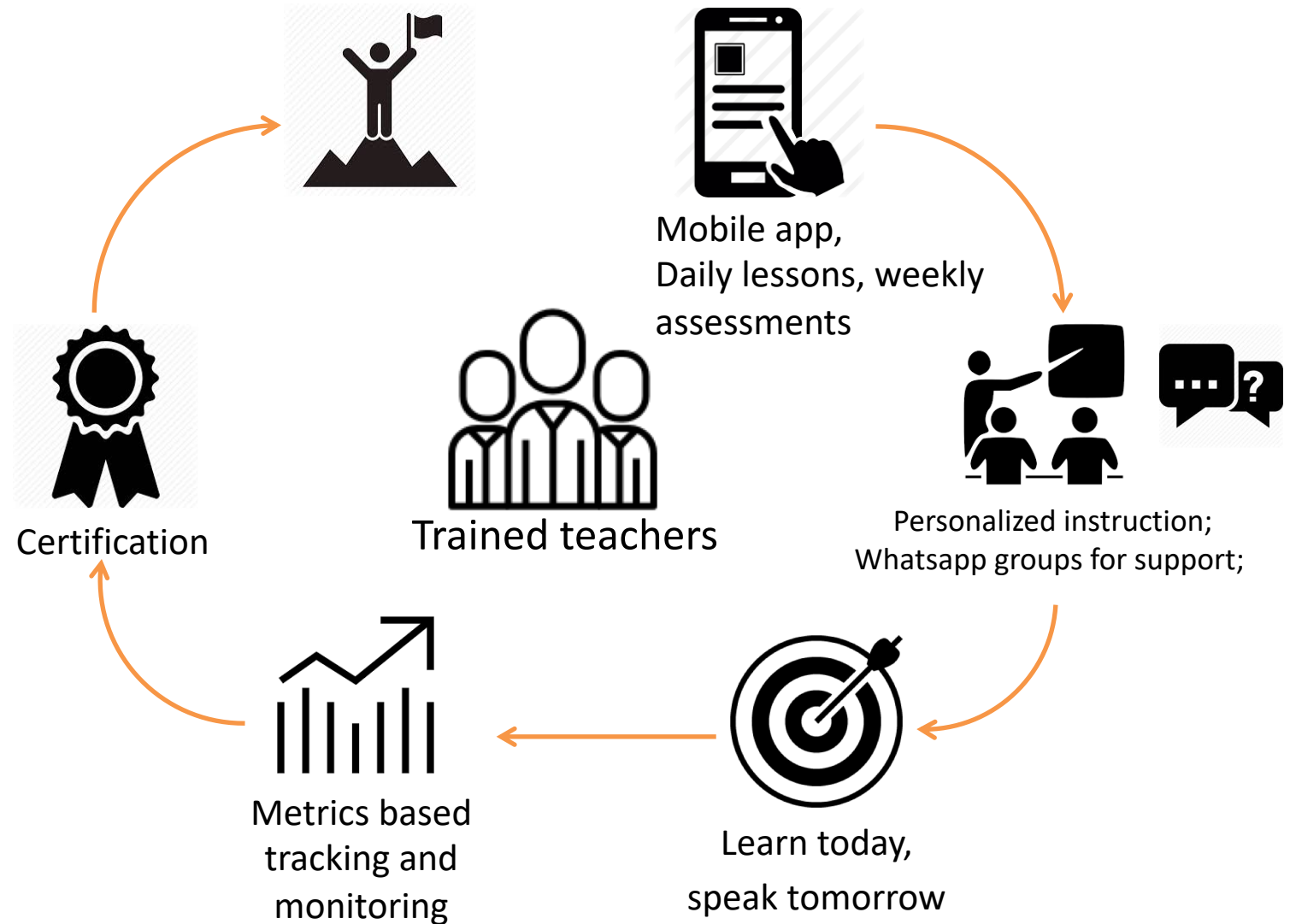
How does TEFD work?

Minimum requirements

- Smart Phone
- Data connectivity
- Supportive school leadership

Unique advantages

- Relevant to everyday situations in classrooms
- Micro-lessons
- Immediate implementation
- No travel, no routine change
- 1-1 mentoring for practice



Content structure

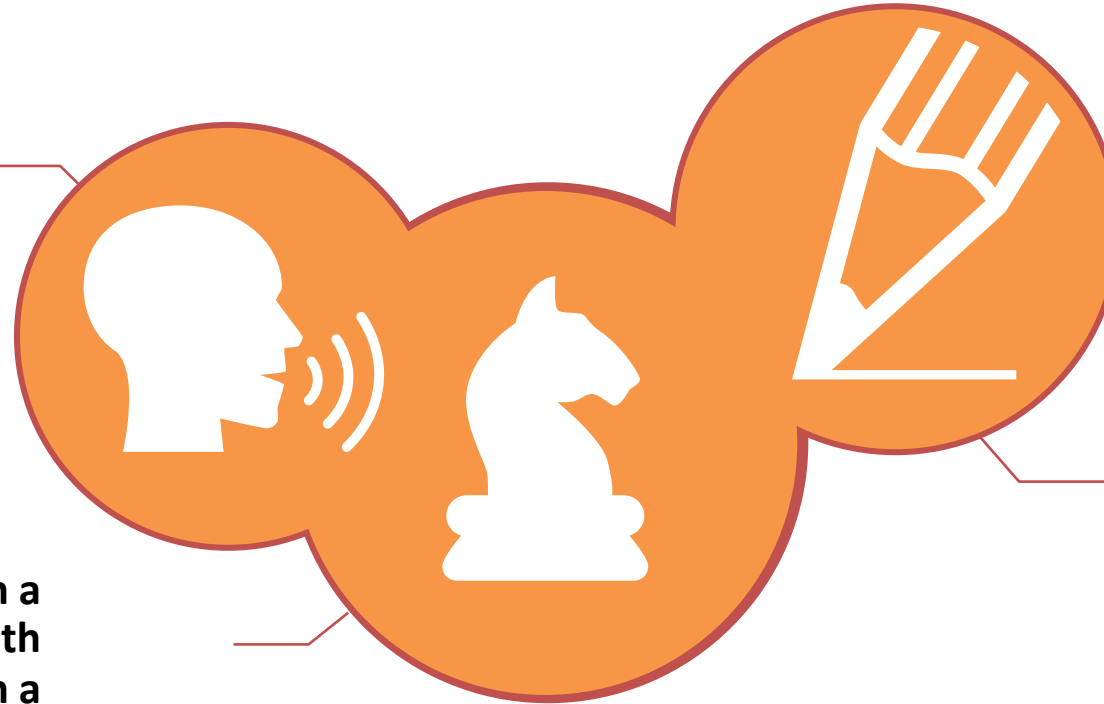
Each Level has 60 lessons delivered over 3 months

LEVEL 1

Basic English for Classroom sessions; **Framing Questions-all forms**; Common errors and mispronunciations – Part 1; **Basic parts of speech**

LEVEL 2

Promoting English in a Classroom; Dealing with parents and colleagues in a professional setting; **Time related discussions**; Common errors and mispronunciations – Part 2; **Stating reasons and conditions**;



LEVEL 3

English for professional development; **Application in real life**; Describing and narration; **Common Errors** and mispronunciations - **Part 3**; Literary concepts and Advanced Grammar

Proposal: Fluency Development Programme



BodhiTree

Democratising Teaching Excellence

- Lessons delivered to Smartphone everyday
- Teachers learn before attending the contact sessions
- Contact sessions: 15 mins/week/Phone/1-1
- At the teachers' convenience, time and place
- Per level: 3 months;
- 3 levels
- Certify @ Each level

A black and white photograph of three young children of South Asian descent smiling warmly at the camera. The child on the left is slightly out of focus, while the two children in the center and on the right are in sharp focus. They are all wearing light-colored clothing. The background is a soft, out-of-focus grey.

because *knowing* English opens many doors!